

**#1
PRODUCT
LEADER**

Developed with
professional truckers
for the highest quality
dash camera!

amiGO!

dash cam DC710

- DASH CAMERA INSTALL QUICK START GUIDE
- DASHCAM VIEWER SOFTWARE INSTALL QUICK START GUIDE
- DASH CAMERA USER MANUAL



REC **UP TO
HD1296P**

170° Wide Angle Lens

GPS and G-Sensor

Motion Detection/Always-On

**UP TO
33-hour Loop-Recording***

miniTV-Out

Included in this Package

Quick Start Guide/
User Manual



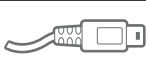
Micro
Memory Card



Micro Memory
Card Reader



GPS Viewer
Software (PC/Mac)



Data/Power
Cable



GPS
Module



Vehicle Power
Cable



Windshield
Plate



Windshield
Suction Cup

Table of Contents

Dash Camera Install Quick Start Guide	Page 4-6
Dashcam Viewer Software Install Quick Start Guide	Page 7-8
Dash Camera User Manual	Page 9-14
Micro Memory Card Maintenance	Page 15

**Questions? Comments? Contact Instant Imaging Corporation (IIC Inc.):
(262) 334-7777 / info@instantimagingcorp.com**

Product Guarantee and Limitation of Liability

This product is approved by ISO9001:2000 International Quality Standard and certified with FCC, CE and SGS. LIMITATION OF LIABILITY (1-YEAR WARRANTY): This product will be replaced if defective in assembling or packaging. Except for such replacement this product is sold without warranty or liability even though defect, damage or loss is caused by negligence or other fault.

Copyright infringement Warning

Please note this product is for personal use only. The forms of usage should not offend or infringe international or domestic copyright laws and regulations. All recorded videos should be for personal use only. Please note that using this product for recording of occasions like shows, exhibitions or commercial activities will infringe others' copyrights or legislation rights.

DASH CAMERA INSTALL QUICK START GUIDE

! IMPORTANT !

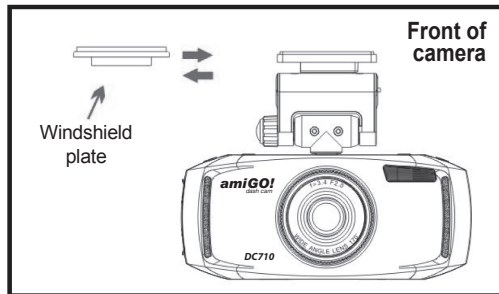
TIME ZONE & DATE/TIME SETTINGS

This dash camera is pre-set for -5 Time Zone (Eastern Standard Time). You must change this setting to your local Time Zone to accurately record the correct time. If the time is off, the included Dashcam Viewer software may not work correctly. To change the Time follow these steps:

1. Turn the camera on
2. Press Menu > TimeZone then adjust with the Up and Down arrows based on the TimeZone table below.
3. Confirm with the OK button.
4. Set the date/time: Press Menu > Dash Camera Settings (gear icon) > Time Setup then adjust the time accordingly. The GPS module will auto-correct any minor time errors upon finding a signal.

US Time Zone	Pacific	Mountain	Central	Eastern
Daylight Saving Time Off	-8	-7	-6	-5
Daylight Saving Time On	-7	-6	-5	-4

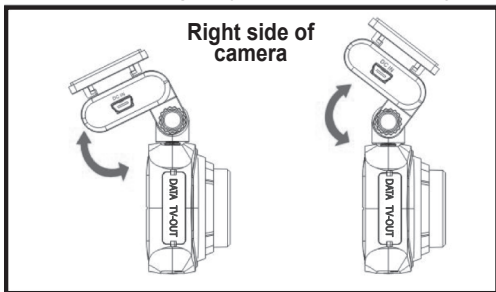
Installation: Camera installation



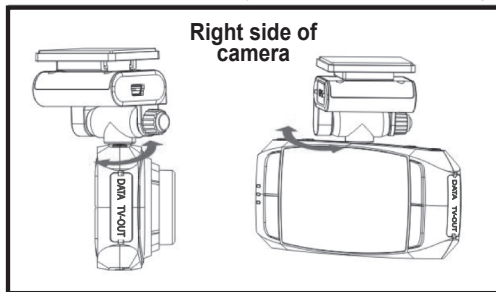
Windshield plate: Align the camera with the windshield plate and push into slot; the camera should fit snug in place. Remove adhesion backer and install the plate and camera to your vehicle windshield. **NOTE: Do not** install camera to your dashboard, the video will record upside down. **Do not** place camera blocking driver's view.

This process can also be replicated with the supplied **Windshield Suction Cup**. **NOTE:** Be sure to remove the clear, protection backer from the cup before installation. **Do not** install suction cup and camera to your dashboard as the video will record upside down. **Do not** place camera blocking driver's view.

Bracket rotation/angle adjustment: If the recording position is not appropriate, it can be adjusted up, down, left and right.

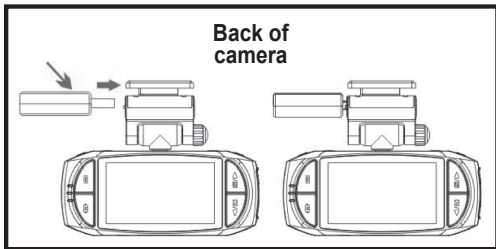


Up and Down Rotation: Loosen the bracket nut on the right side of the bracket then adjust up and down to the appropriate angle (the maximum is 180). Tighten the bracket nut.



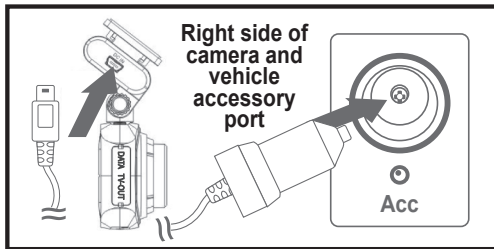
Left and Right Rotation: You can rotate the angle of the device directly (the maximum angle is 200) without loosening the bracket nut.

GPS Module: installation, removal



GPS module: Insert the GPS module into the left side of the camera bracket (GPS port) to receive GPS signals. Pull out to remove, if necessary. This module is required for tracking.

Vehicle Power Cable: installation, removal



Power cable: Insert the mini data cable into the DC IN port on the right side of the camera bracket. Insert the car charger plug into the accessory port in your vehicle.

By default, this camera is set up to automatically begin recording upon starting the vehicle. Camera will stop recording a duration after turning off the vehicle unless plugged into an always-on accessory port, in which case it will continue recording. For full instructions, please refer to the Dash Camera User Manual.

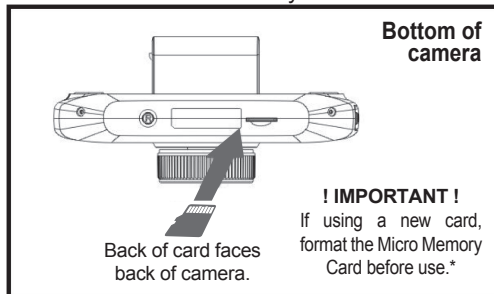
! IMPORTANT !

CHANGING THE MICRO MEMORY CARD

Your camera is pre-loaded with a Micro Memory Card. The card has been pre-formatted to optimize performance on the dash camera; **NO FORMATTING IS NECESSARY WITH THE PRE-INSTALLED CARD.** If you choose to replace the pre-installed Micro Memory Card with a different card, always use a High Speed 10 card and follow these steps:

- 1. Verify that the camera is OFF.** Installing a Micro Memory Card with the power on may damage the card, the dash camera or both.
- The card can only go in one way; **the back of the card faces the back of the camera.**
- 3. Gently push Micro Memory Card into the slot** at the bottom of the camera until it clicks.
- 4. Format the card.** Turn the camera on, press Menu > Settings > Format.

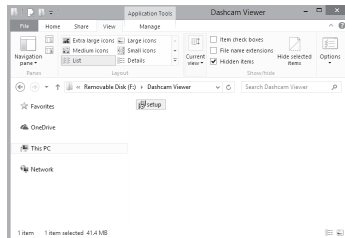
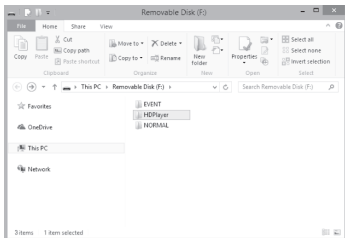
Installation: Micro Memory Card installation



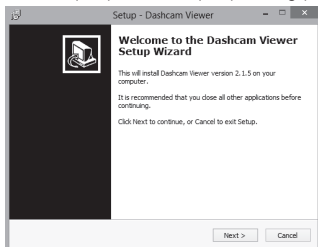
Additional information about Micro Memory Card maintenance can be found on Page 15.

DASHCAM VIEWER SOFTWARE INSTALL QUICK START GUIDE

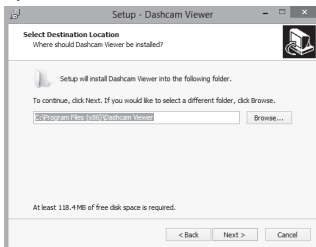
Your dash camera is pre-loaded with Dashcam Viewer software that allows you to watch video footage, track your route and more on your computer. See below for full installation instructions (Windows or Mac). **Recommended system requirements: Windows 10, 64-bit, 17 processor, Nvidia or AMD video adapter. Windows 7, 8, 10 or Mac OS X 10.8.5 or higher Compatible.**



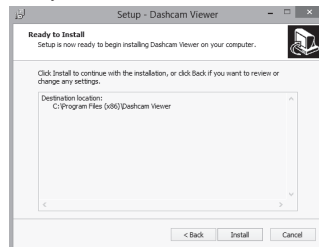
Plugging your dash cam into a PC or Mac data port and pressing the Power Button on the camera will open the Removable Disk drive; this is the dash camera's memory card. If this box does not automatically appear you may have to go to the Start Menu and then to the PC icon (Windows). Click the Removable Drive. Choose the HDPlayer folder from the selections and then the setup file that applies to your Operating System (Viewer32 (Win), Viewer64 (Win) or .dmg (Mac)) If you are unsure of which version of Windows you may have, choose Viewer32.



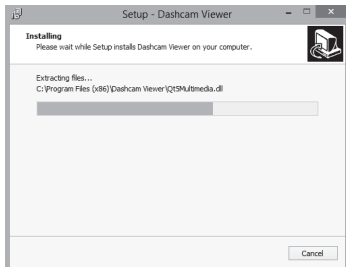
Clicking Setup prompts you with the Setup Wizard. **You may need Admin privileges to install.** Click Next.



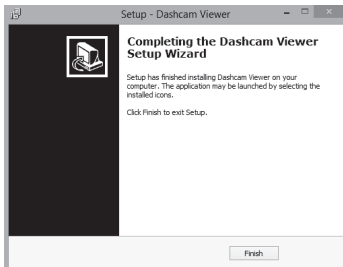
The Setup Wizard will automatically choose the location to install. You may change this if necessary. Click Next.



Click Install to confirm your program install location. Click Back to make changes.



Wait for the program to install to your PC or Mac. Depending on your setup, this may take a minute or two.



The Setup Wizard is complete and the program has been installed. You should not need to restart your computer. Click Finish.



Dashcam Viewer's icon should be found on your desktop. Double-click to Start.



You may add Windows for Data, Graph and Map and change the size of your viewscreen boxes. Click the upper-left icon to Open Movie Folder.



Find the Removable Drive and select the NORMAL folder. If you have moved the files from the dash cam to your computer, locate the folder in which the files are located.



Wait for the files to Process; this will take a few minutes based on number/quality of files. A progress bar will indicate when the files are ready. When done, the first file will begin to play.

For full Dashcam Viewer instructions, please refer to the e-manual located in the Dashcam Viewer installation folder on your PC/Mac or go to Help > User Manual in the Dashcam Viewer program. (E-manual reader program is required - not included.) For technical questions about the amiGO! Dash Cam or Dashcam Viewer software, please contact (262) 334-7777 or email info@instantimagingcorp.com.

DASH CAMERA USER MANUAL

Instructions before use

This User Manual will describe the usage of this product in detail and at the same time provide comprehensive information including operation and specification, etc. Please read the manual carefully and keep it in a safe location for future reference.

CHECK PRODUCT ACCESSORIES

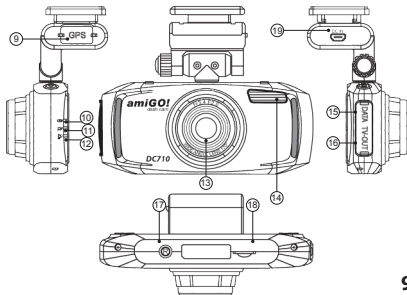
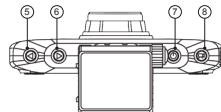
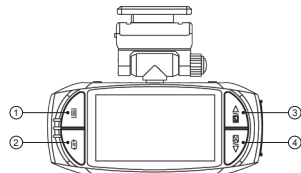
Please check whether the following accessories are present before use:

1. 32GB Micro Memory Card (High Speed 10) x 1
 2. Micro Memory Card Reader x1
 3. Data/Power Cable x1
 4. GPS Module x1
 5. Vehicle Power Cable (12ft) x1
 6. Windshield Plate x1
 7. Windshield Suction Cup x1
 8. Dash Cam/Dashcam Viewer* Quick Start Guide/User Manual x1
- * Dashcam Viewer installed to memory card upon camera startup

PRODUCT DESCRIPTIONS**

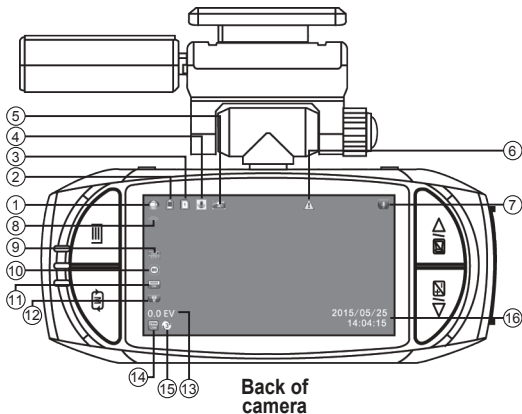
1. Menu / Emergency EVENT Button
2. Mode (Video, Photo, Viewing)
3. UP / Mute Microphone
4. DOWN / EV
5. LEFT / LED Light On/Off Button
6. RIGHT / Select
7. Power On/Off
 - a. Short Press: Power On/Off; press again to turn off the display. (This will NOT power it off.)
 - b. Long Press (3 sec): Forced Power Off
8. Record / Snapshot / Confirm (OK)
9. GPS Port
10. Red Light Indicator (Charging)
11. Blue Light Indicator (Recording)
12. Green Light Indicator (GPS Signal) - GPS Module required
13. Lens
14. LED Light
15. Data Port/AV Output
16. miniTV-Output
17. Reset Button
18. Micro Memory Card Slot
19. DC IN (**Where you connect your Vehicle Power Cable**)

** This will be listed in the instructions as **PD Icons**.



GETTING TO KNOW YOUR DASH CAMERA VIEWSCREEN ICONS:

- 1) Movie Camera Icon: Indicates camera is in Video Recording Mode. Camera Icon: Indicates camera is in Photo Mode.
- 2) Battery: Indicates the remaining power for the device. Charge your camera when the power is low. Plug icon shows while charging and top red LED lights.
- 3) Micro Memory Card: Appears on screen when the card is properly inserted. Otherwise, this is represented with an "X"
- 4) G-Sensor: The higher the blue color stands, the more sensitive
- 5) Motion Detection: This icon shows up only when it is enabled
- 6) ! Lock: This Icon shows up when collision/vibration occurs and followed by device mandatory file protection (see G-Sensor)
- 7) Microphone: Shows up in Video Recording Mode, press the UP/MIC button to turn it On/Off
- 8) GPS: External GPS Module required
- 9) HDR: When resolution is set to 1920x1080@30P HDR, it appears.
- 10) Speed Limit: Preset speed limit (GPS Module required)
- 11) ADAS: Only appears when it is enabled
- 12) LED: On/Off
- 13) EV: Exposure Value, "+" means brighter, "-" means dimmer
- 14) Video Resolution
- 15) Loop Recording: 3 Minutes (for the current setting)
- 16) Date Stamp



ACCESSING FILES VIA A PC OR MAC:

- 1) Connect the dash camera to a PC or Mac with the included Data cable via the Data Port on the right side of the camera. (PD Icon 15). DO NOT use the DC IN port at the right side of the camera bracket. This will only cause the camera to charge and/or record based on user settings.
- 2) The Removable Disk icon will appear on the computer's taskbar, desktop or an Explorer window should appear. If not, go to the Start Menu and select "This PC" (Windows).
- 3) The recorded files will be stored in either the NORMAL (looping video) or EVENT (EMERGENCY) folders.
- 4) Transfer any files (video or photo) by clicking, dragging and then dropping from the dash camera folders to your selected folder on PC/Mac or through copy/paste method. View videos (with tracking data) by using a pre-installed, supplied viewer (recommended). Videos may not may not correctly display GPS data using standard video players.
- 5) The top red LED will indicate power to the device while the middle blue LED will blink when the camera is busy. Do not remove the Data cable or turn the camera off while this light is blinking. Doing so may corrupt data being transferred or the memory card. Wait for the blue light to stop blinking to safely remove the device. In Windows, click the Data icon in the lower-right corner of the screen and then Safely Remove. On a Mac, Eject the Removable Drive.
- 6) Press the Power button at the top of the camera (PD icon 7) to turn it off.
- 7) Remove the Data cable from the computer and the Data port on the side of the camera. Replace the rubber cover to keep dirt, debris or moisture away from the contacts.

TRANSMIT THE VIDEO TO TV:

You can also transmit the video from the dash camera to a TV to playback the videos/photos or adjust the camera settings. The steps areas follows:

1. Your video equipment should have AV IN or multimedia ports.
2. Connect AV cable or mini-to-TV multimedia cable (optional purchase) to the video equipment and the drive recorder.
3. Connect the home use transformer (optional purchase) to the drive recorder and the house power socket.
4. Adjust the channel of the video equipment to AV or Multimedia mode.
5. Installation completed.

MENU OPERATION:

Press the Menu Button (PD icon 1) to activate the Menu selection. Press the UP (PD icon 3) or DOWN (PD icon 4) buttons to select sub-menus and options. Pressing Record / Snapshot / Confirm (OK) button (PD icon 10) button will confirm your choice. You may also press the Left (PD icon 5) and Right (PD icon 6) buttons to make selections or change from the Video/Photo Settings Menu to Dash Camera Settings Menu. Changing between the Video/Photo Settings Menu and the Dash Camera Settings Menu can also be done by pressing the Mode Button while in Menu Mode. Pressing Menu while in a sub-menu or option will return you to the previous Menu or cancel a selection. Menu choices are described in detail on page on Page 2.

When not in Menu mode, press the Mode Button (PD icon 2) to switch between Video Recording Mode, Photo Mode and Playback.

Please note, you will not be able to access the Menu or change the Mode while video is recording. Stop recording by pressing the Record / Snapshot / Confirm (OK) button (PD icon 10) first, then press the Menu Button.

PLAYBACK:

Press the Mode button (PD icon 2) to switch to Playback mode, represented by thumbnails of your videos and photos. Use the UP or DOWN buttons to select between EVENT (triangle with exclamation point) or NORMAL files. Press the OK button to select your folder.

- UP or DOWN buttons: Select your video/image
- Record / Snapshot / Confirm (OK) button: View video/image
- Menu button: Display Play Mode Setting. Return to Playback Menu/cancel selection.
- Play Mode Setting: Play one, Play all, Repeat one, Repeat all or Delete files.
- Delete file: Delete this file (single video clip/image) currently selected or Delete all files (all video clips/images - this cannot be undone). Press OK button to confirm; press Menu button to cancel.

PREVIEW:

- UP or DOWN buttons: Cycle through your videos or photos in PREVIEW mode.
- Record / Snapshot / Confirm (OK) button: Play/Pause current video
- Menu: Play Mode Setting > Play one, Play all, Repeat one, Repeat all
- Mode: Return to Playback mode

MUTE MICROPHONE (AUDIO):

While in Video Recording Mode, you can disable the audio by pressing the "UP / Mute" button. Press again to enable the audio.

*** UNDERLINE DENOTES DEFAULT FACTORY SETTINGS ***

VIDEO RECORDING MODE (MOVIE CAMERA ICON):

By default, this camera is set up to automatically begin recording upon starting the vehicle. This will happen with the following conditions: 1) Micro Memory Card is correctly installed, 2) the Vehicle Power cable is plugged in via the DC IN port on the camera bracket and the car charger plug is 3) inserted into the accessory port in the vehicle or 4) hardwired to the vehicle.

You will see a red blinking icon (top, red LED: icon 10) when the camera is charging as well as a Movie Camera icon in the upper-left of the screen when it is in recording mode. In recording mode, you will see a blue blinking icon (middle, blue LED: icon 11) and can manually stop the recording by shortly pressing the "Record / Snapshot / Confirm (OK)" (icon 8) button. If no other selection is made - Menu, Photo Mode or Settings - the camera will begin recording again in a few seconds.

A green icon (lower, green LED: icon 12) will light when a GPS connection has been established. GPS connection requires the GPS Module to be plugged into the GPS port on the camera bracket.

VIDEO SETTINGS MODE:

Video Resolution

Video resolution can be configured before recording. Higher numbers mean higher resolution and better picture quality, storage consumption will be relatively faster than lower resolution settings. P designates FPS (Frames Per Second) during recording. Higher FPS means smoother video; 60P will record twice as fast as 30P; 60P will also lead to larger file size. 16:9 is the standard widescreen aspect ratio; 21:9 is shot in anamorphic widescreen format. HDR is High-Definition Resolution.

MENU Button **【Video Resolution】** **【2560x1080 30P 21:9】** / **【2304x1296 30P 16:9】** / **【1920x1080 30P 16:9】** / **【HDR_1920x1080 30P 16:9】** / **【1280x720 60P】** / **【1280x720 30P】**

Image Quality

Select the quality of video that will be recorded. S.Fine (Super Fine) will record the most pixels; Normal will record the least. More pixels means a higher quality frame image and larger file size.

MENU Button **【Image Quality】** **【S.Fine】** / **【Fine】** / **【Normal】**

Date Stamp

Through this function, you can select whether to show time and License plate number (DriverID) and GPS rate information during recording.

MENU Button **【Stamp】** **【On】** / **【Off】**

Meter Mode Setting

This dash camera detects focus. You can select Center (Wide), Average or Spot (Narrow).

MENU Button **【Meter Mode Setting】** **【Center】** / **【Average】** / **【Spot】**

Light Frequency (Anti-Flicker)

Selecting Light Frequency will optimize the camera for 60Hz or 50Hz lighting to avoid video flicker. Generally 60Hz is set for regions in North America and Japan and 50Hz is set for regions in UK, Africa, Australia, most of Asia and Russia. AUTO will try to determine frequency.

MENU Button **【Light Freq】** **【Auto】** / **【60Hz】** / **【50Hz】**

Date Stamp Setting

When Date Stamp is ON, date/time/plate number (preset) will appear on the recording files.

MENU Button **【Date Stamp Setting】** **【Off】** / **【On】**

ADAS Detect (Advanced Driver Assistance Systems) - GPS Module Required

ADAS will detect the following: **1) Lane-Departure-Warning-System (LDWS):** If lane-changing occurs, warning picture will appear to warn the driver. **2) Low-Light-Warning-System:** The camera will remind you to turn on headlights in low-light conditions. **3) Driver-Fatigue-Warning-System:** Device will send a warning picture and tone to the driver when continuous driving (more than 4 hours) is detected. This will follow every two hours. **ASDS does not necessarily indicate an Event.**

MENU Button **【ADAS Detect】** **【Off】** / **【On】**

Loop Setting

The dash camera is set to record in segments of 1, 3, or 5 minutes. These videos will record to the full limit of the memory card. Upon writing the full memory available, the new videos will overwrite the old data in order to achieve non-interrupted recording.

MENU Button **【Loop Setting】 / 【1 minute】 / 【3 minutes】 / 【5 minutes】**

Speed Setting

Select **1**) Kilometers per Hour (KM/H) if in the UK or Metric-based countries or **2**) Miles per Hour (M/H) in the US or non-Metric countries. When Date Stamp is ON, speed will appear on the recording files.

MENU Button **【Speed Setting】 【KM/H】 / 【M/H】**

TimeZone

Set the time zone to your local code. Camera Automatically synchronizes time if GPS Module is attached. **Add 1 if Daylight Saving Time (DST) is observed. (ie. Chicago, DST off: -6; DST on: -5)** **This setting must be accurate for Dashcam Viewer to work properly. Do not forget to change this setting before or after observance of DST. See page 4 for US Time ZoneDST table.**

MENU Button **【TimeZone】 【-12】 to 【+12】**

AE (Auto Exposure) Bias

If EV is adjusted to + (right) side, you can avoid under-exposure or dark objects as shooting against a bright background. If EV is adjusted to - (left) side, then you can avoid over-exposure or bright objects as shooting against a dark background or at night. While recording, press the "DOWN / EV" button to change the EV setting manually; the value will change through +2.0 to -2.0 with each button press.

MENU Button **【AE Bias】 【-2.0】 to 【+2.0】**

Speed Warning - GPS Module Required

Select 80KM/H (~50M/H) or 120KM/H (~75M/H) to receive a speed warning tone for going over these limits.

MENU Button **【Speed Warning】 【Off】 / 【80KM/H】 / 【120KM/H】**

LED Setting

Selecting On or Off controls the button LED displays.

MENU Button **【LED Setting】 【On】 / 【Off】**

G-Sensor

This dash camera is equipped with a G-Sensor (Gravity Sensor) to determine the direction, bearing and any forces exerted upon the vehicle. In the case of a collision (or EVENT), the recorded data and video will be protected and not overwritten by looped recording. This video will show up in the EVENT folder. Adjust the sensitivity parameters of x, y and z axis' with this setting. If set to High, the least sensitivity will record video to EVENT; if set to Low, more force will be needed to record video to EVENT. Choosing Off will not record any information to the EVENT folder; all video will be overwritten in looped recording.

MENU Button **【G-Sensor】 / 【Off】 / 【High】 / 【Normal】 / 【Low】**

Motion Detection

When set to On, the camera will automatically record only when it senses movement. If set to Off, the camera will record regardless of movement.

MENU Button **【Motion Detection】 【Off】 / 【On】**

PHOTO MODE (CAMERA ICON):

To enter photographic mode, press the "Mode" button. If the DVR is in Recording Mode (with a red blinking icon), you need to stop the recording by pressing the "Record / Snapshot / Confirm" button, then press the "Mode" button again. In the upper left corner of the display, notice that the "Movie Camera icon" has changed into an icon of a "Picture Camera". Press "Record / Snapshot / Confirm" button to take a photo. Go to the menu for Photographic Mode by pressing the "Menu" button.

PHOTO SETTINGS MODE:

Photo Resolution

Photos resolution can be configured during capture. Higher value means higher resolution and better picture quality.

MENU Button Menu **【Photo size】 【4M (2688x1512 16:9)】 / 【9M (4000x2250 16:9)】 / 【13M (4800x2700 16:9)】**

Image Quality

Select the quality of image that will be taken. S.Fine (Super Fine) will take the most pixels; Normal will take the least. More pixels means a higher quality image.

MENU Button **【Image Quality】** **【S.Fine】** / **【Fine】** / **【Normal】**

Stamp Setting

When Stamp is set ON, date/time/plate number (preset) will appear on images.

MENU Button **【Date Stamp Setting】** **【Off】** / **【On】**

DASH CAMERA SETTINGS:

Language Setting

Use this setting to adjust the menu to your preferred language.

MENU Button **【Language Setting】** **【English】** / **【简体中文 (Simplified Chinese)】** / **【繁體中文 (Traditional Chinese)】** / **【Русский (Russian)】**

Record Mode Setting

Camera will automatically record when powered on when set to Auto. If set to Manual Record, press the OK button at the top of the dash camera to begin and stop recording.

MENU Button **【Record Mode Settings】** **【Auto Record】** / **【Manual Record】**

System Mode

This setting can be adjusted when you use an AV cable or mini-to-TV multimedia cable to transmit the video to a TV. Select local video specifications NTSC (US, Japan) or PAL (UK, Africa, Australia, most of Asia and Russia) to solve the problem of flickering videos or images.

MENU Button **【System Mode】** **【NTSC】** / **【PAL】**

DriverID Setting

Press UP or DOWN to change letters or numbers. Press OK button at the top of the dash camera to confirm the letter or number. There are 9 spaces available. After you set up your license plate number or ID, this will be shown in recorded videos when the Date Stamp Setting is set to On. To escape DriverID Setting, press the Menu button.

Time Setup

Adjust the current date and time. (Drive recorder with GPS feature will automatically sync the standard date and time after positioning, no setting is required).

MENU Button **【Time Setup】** Press UP or DOWN to change values; press OK button to enter setting, select Year, Month, Day, Time, Minute.

Format

This function will delete all data (video and images) on the memory card INCLUDING protected (EVENT) data. When the memory card is used for a long time, too much data will reduce the access efficiency. This function will optimize the access speed of the memory card. Formatting should be done regularly; be sure to backup any videos or images you wish to keep. (See page 15 for details.)

MENU Button **【Format】** **【Yes】** / **【No】** Press OK Button to select. Confirm the process by pressing UP or DOWN once (to Check Mark) and OK.

Default Setting

This function will reset all settings on the dash camera to default factory settings.

MENU Button **【Default Setting】** **【Yes】** / **【No】** Press OK Button to select. Confirm the process by pressing UP or DOWN once (to checkmark) and OK.

Backlight Off Setting

Device will automatically turn off the display after certain amount of time, also called screen saver.

MENU **【Backlight Off Setting】** **【Off】** / **【1 Min】** / **【3 min】** / **【5 min】**

Delay Power Off

Device will automatically power off (when you unplug the power supply) after certain amount of time.

MENU **【auto power off】** **【Off】** / **【15 sec】** / **【30 sec】** / **【1 min】**

BEEP/Chime Sound Setting

Turn the sound on or off.

MENU Button **【BEEP/Chime Sound Setting】** **【On】** / **【Off】**

Version Info

View the firmware version of the device.

MENU Button **【Version】**

MICRO MEMORY CARD MAINTENANCE

Your camera is pre-loaded with a High Speed 10, MLC Micro Memory Card. The card has been pre-formatted to optimize performance on the dash camera. As large files are constantly being written and over-written, proper maintenance may be required regularly to optimize the Micro Memory Card's performance. Without doing so, this may lead to fragmentation, slower write speeds, file corruption or card failure. Keep in mind, however, that all cards, over time, will not last forever and may need replacing. If the pre-loaded card needs to be replaced, minimally use a High Speed 10, MLC Micro Memory Card.

As by default, the dash camera should begin automatically recording. If you find that the dash camera stops recording at any time (aside from Motion Detection Mode where record-time is based on movement or your dash camera is no longer powered), your Micro Memory card may need to be re-formatted. Please use the following guides:

Temporarily begin recording (until re-formatted):

1. Press the **Reset Button** at the bottom of the camera. (PD Icon 17)
2. Press the **Power Button** to restart the camera.

If Movie Recovery shows on-screen:

If the memory card has corrupted in the middle of recording (the dash camera has stopped recording as in the ways noted above), "Movie Recovery" may show up on screen upon restarting the dash camera. To finalize the previous recorded file (to make the file playable), move the cursor to the Check Mark and press the Confirm button. If this is not done and the X is selected, the video will be unplayable.

After Recording:

1. Turn off the dash camera.
2. Backup any files you may want to keep by connecting the camera to your computer. (See page 11.) When done, remove the Data Cable. If no backup is needed, go to step 3.
3. Format the card. Turn the camera on, press Menu > Settings > Format. Please note that all files will be erased in this process and files cannot be recovered.
 - * Do not use a PC or Mac to format your card; the Micro Memory Card will not be correctly optimized for the dash camera.

Regularly reformat to keep your card optimized:

Heavy Usage (Recording 24/7): Once every 3-6 weeks.

Moderate Usage (Recording more than 6 hours a day): Once every 6-10 weeks.

Light Usage (Recording daily for less than 6 hours): Once every 10-20 weeks.

Micro Memory Card Speed/Memory Definitions

Speed

There are different Speeds of memory cards available: 2, 4, 6 and 10. These numbers, typically found in a partial circle, indicate read/write speed (streaming) between the device and the card; the higher the number, the faster the card will read/write information. As much data will be constantly written to the memory card from the dash camera, it is best to use an MLC High Speed 10 Micro Memory Card. Additionally, you may look for higher speed markings with a U and 1-3.

Solid State Memory

SLC (Single Level Cell - 1 bit/cell): Fastest read speed and longest, most durable life; typically the most expensive

MLC (Multi-Level Cell - 2 bit/cell): Fast read speed and moderate, durable life; moderately priced

TLC (Trinary-Level Cell - 3 bit/cell): The slowest read speed and the least durable service life; typically the least expensive

For heavy-duty usage, you will want to use MLC or SLC based memory cards because of their durability. TLC-based cards are not recommended for this product as the number of read/write cycles (repetitive writing and re-writing) will be considerably less and may lead to less reliability while recording.

amiGO!

dash cam
DC710

IIC Inc.

Instant Imaging Corporation

**1935 Stonebridge Rd
West Bend, WI 53095**

InstantImagingCorp.com | (262) 334-7777 | info@instantimagingcorp.com

**Camera made in China. Bundled Dashcam Viewer software made in the U.S.A.
© Instant Imaging Corporation (IIC Inc.)**